

How to send MIDI data from a MIDI controller connected to a master computer to a second computer via the Network (MAC ONLY)

In this tutorial, a Launchpad is used as an example MIDI device, but almost any MIDI device can be used. Also, there is a known bug which prevents Push from being used in this way, which we are working on addressing.

Before following this tutorial, first set up a local network between your two Mac computers by following the steps in this Apple article:

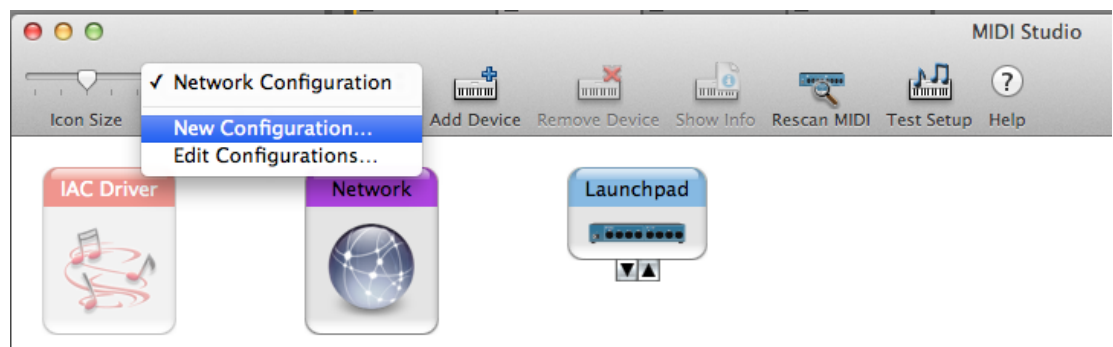
<http://support.apple.com/kb/PH10666>

After setting up the network, you are ready to continue with this tutorial.

1. Setting up the "Master" Computer

Open Audio/MIDI Setup and let's click on Window-->Show MIDI Window.

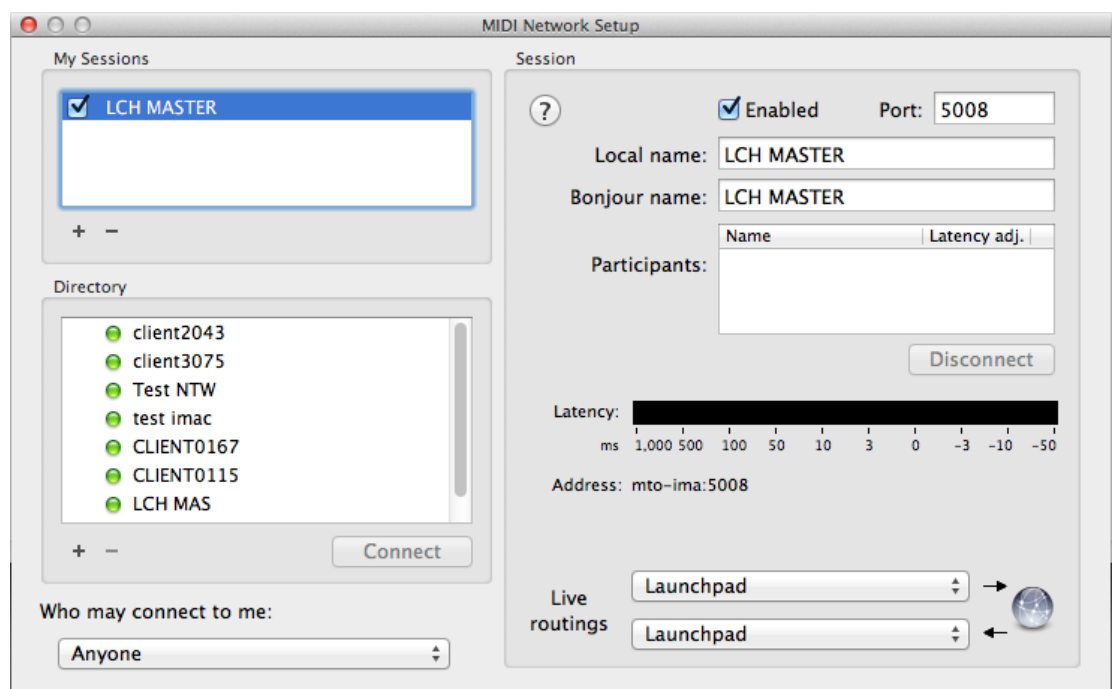
Here, we suggest creating a completely new MIDI configuration, which you can do by clicking on the Configuration drop down menu.



The new configuration will show only the devices currently plugged to this machine.

Now let's double-click on "Network" to create a Network Session.

First of all, click on the "+" sign in the "My sessions" section, and enable it by ticking it. At this point you can edit the name of the session: we recommend using the same name both as Local and Bonjour Name.



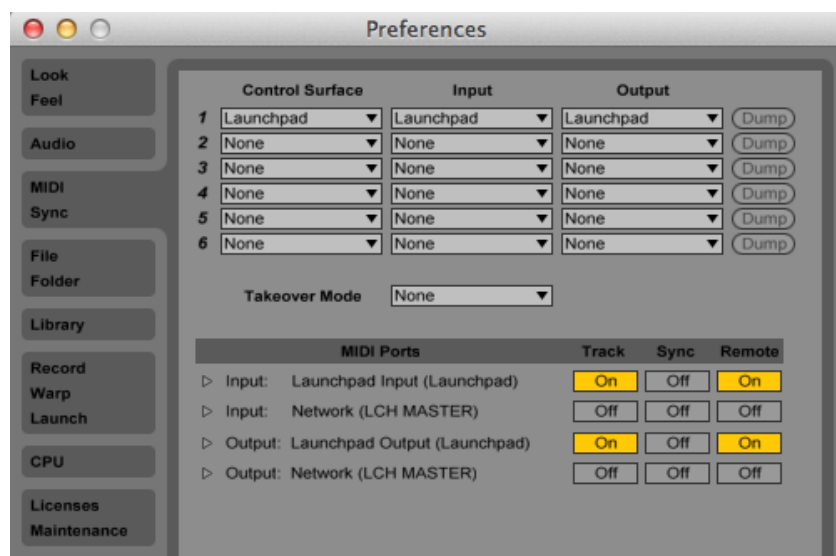
Please also set "Anyone" in the drop down menu on the bottom left corner of this dialog window. Your Session will show up with the Bonjour name on the other computer.

Now the tricky part: in the "Live routings" section, which needs to be configured for the Master computer ONLY (the computer where the MIDI hardware is connected to), you'll want to select your MIDI device in both drop down menus.

If you have problems, it could be due to a bug that causes the "Live routings" selection to be ignored the first time. Once you have chosen the MIDI device in both menus, close the MIDI Network page and open it again: you'll notice that the selection is gone. Please select the MIDI device once more and this time it will work (close and open "Network" to verify).

The "Live routings" selection enables data that is generated from the MIDI device to be sent via the Network connection even without a DAW handling this data first.

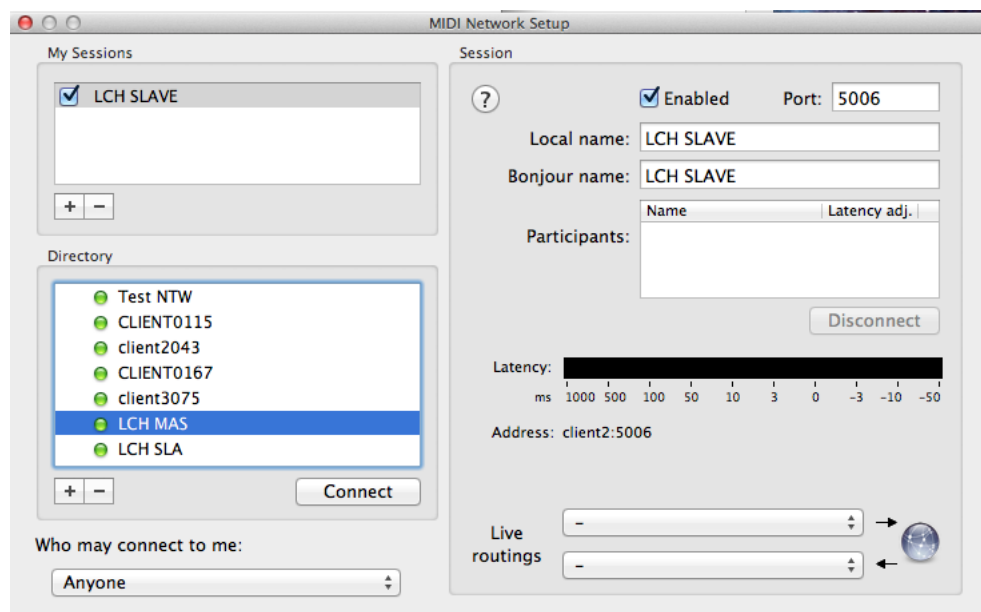
Open Live, then Live's preferences, and set them as shown here below.



The "Master" computer's setup is now completed.

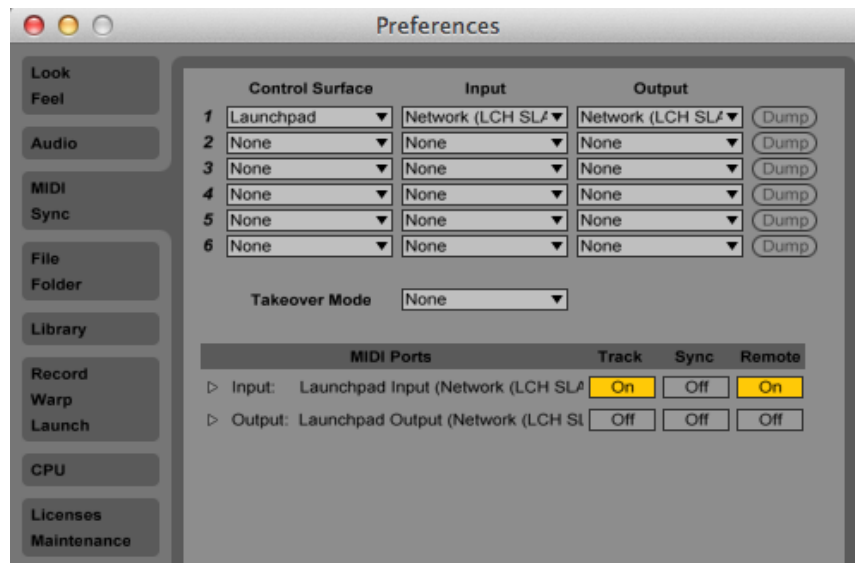
2. Setting up the "Slave" computer

Create a new MIDI configuration as explained above, then create a Network Session as explained above, but leave the "Live routings" empty:



Set "Anyone" here under "Who my connect to me", then find the Master Session in the "Directory" window, select it, and click on Connect. The network connection between the two computers is now established.

Now open Live in the Slave machine, and set up the preferences as shown here:



After this final step, any MIDI data sent from your MIDI controller will also be sent via the network to the "Slave" computer.